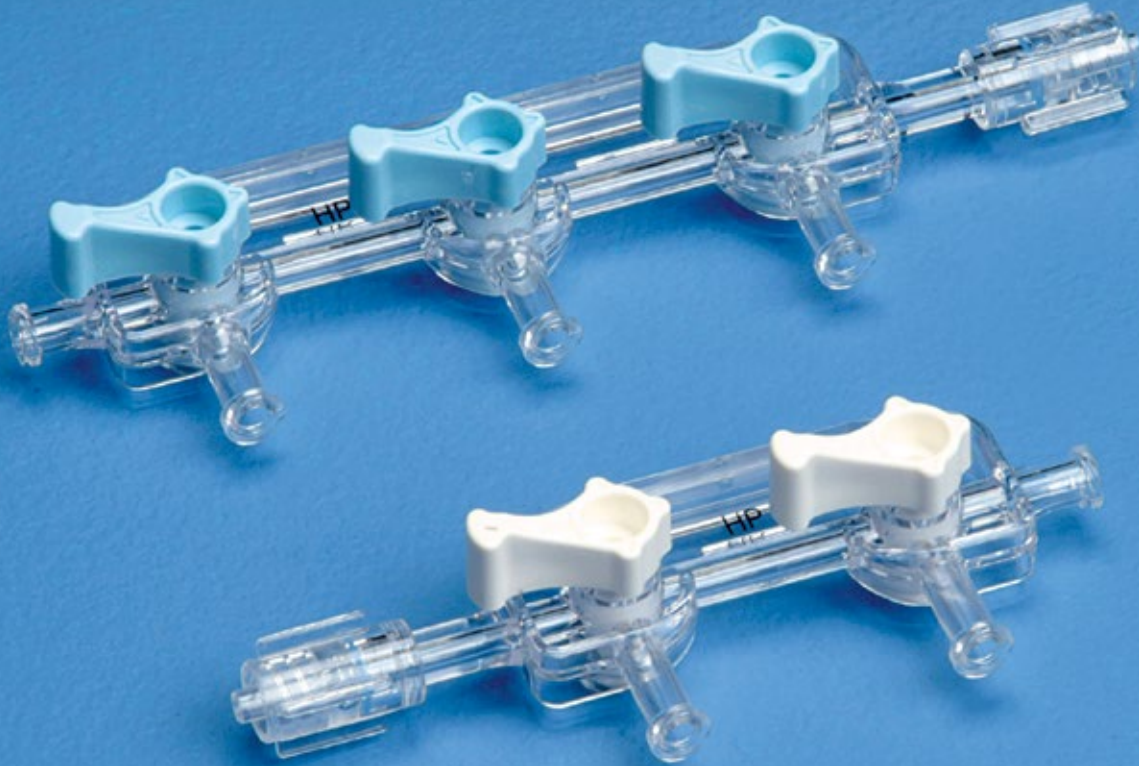


Critical Disposables



Non-Sterile Angiographic Accessories

for Medical Device Manufacturers & Kit Packers



A division of DeRoyal Industries, Inc.

DEROYAL PRODUCTS FOR CARDIOLOGY & ANGIOGRAPHY

Whether it's an innovative manifold or a custom convenience kit, DeRoyal can provide the precision Angio products your customer needs. Our goal is to become your partner of choice for angiographic products. We are committed to maintaining operational excellence that will add value to your company.

* All products packed non-sterile.

CONTENT

Product Listing	Page
Custom Manifold Kits.....	3
Guidewire Bowl.....	3
Manifolds.....	4-5
Stopcocks.....	5
Equipment Covers.....	6
Pressure Monitoring Lines.....	6
Waste Collection Systems.....	7
Hemostatic Y-Adapters.....	8
Percutaneous Guidewire Introducer Needles.....	8
Syringes.....	9
High Pressure Injector Lines.....	10
Ultra High Pressure Injector Lines.....	11
Safety Scalpels.....	12
Needle Counters.....	12
SharpStop™.....	13
Simplicity™ Sharps System.....	13
Splash Stop™.....	14
Contrast Saver Sets.....	14
mBrace™ Wrist Support.....	15
Flexible I.V. Armboard.....	15

* Other products available through your DeRoyal Sales Representative include: Transducers, Inflation Devices, Fluid Administration Sets, Power Injector Syringes, Needles, and Thermodilution Catheters.

CUSTOM MANIFOLD KITS

DeRoyal Custom Manifold Kits are designed to enhance an angiography lab's efficiency by meeting the lab's specifications in one complete package. DeRoyal has the ability to provide these kits on an OEM basis to Medical Device Manufacturers. These can be customized to your individual customer's needs. These kits will allow your customer to:

- Reduce set-up times and increase the number of procedures they can perform
- Reduce total procedure cost
- Reduce waste in packaging and save valuable time



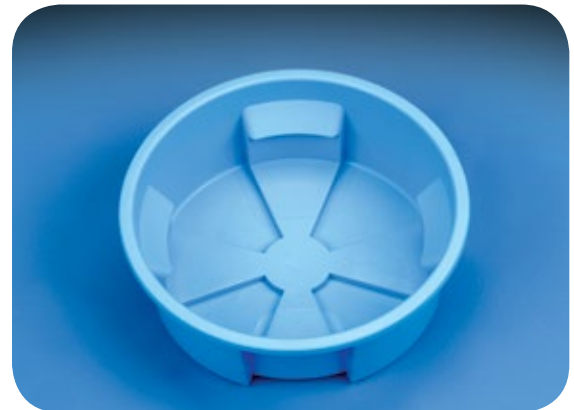
CRITICAL DISPOSABLES

Guidewire Bowl

- Patented* design with built up lip and recessed bottom
- Designed to hold guidewire in place and allow easy removal
- Latex free

Product No.	Description	Quantity
395-GW2000	Guidewire Bowl 2500 cc	32/Cs
395-GW2000CT	Guidewire Bowl 2500 cc	208/Cs
395-9250	Lid for Guidewire Bowl	120/Cs

* Patent # D433,130



Non-Sterile Angiographic Accessories

CRITICAL DISPOSABLES

Low Pressure Manifolds 250 PSI*

- For low pressure injections
- Smooth-turning handles
- Large internal manifold lumen (2.3mm diameter) for high flow rates
- 250 PSI non-sterile pressure rating**
- Latex free



Product No.	Description	Quantity
31-2125	"ON" Left-Handed w/Rotating Adapter; 2 Port	200/Cs
31-2225	"ON" Right-Handed w/Rotating Adapter; 2 Port	200/Cs
31-3125	"ON" Left-Handed w/Rotating Adapter; 3 Port	200/Cs
31-3225	"ON" Right-Handed w/Rotating Adapter; 3 Port	200/Cs
31-4125	"ON" Left-Handed w/Rotating Adapter; 4 Port	100/Cs
31-4225	"ON" Right-Handed w/Rotating Adapter; 4 Port	100/Cs
60-2125	"OFF" Left-Handed w/Rotating Adapter; 2 Port	200/Cs
60-2225	"OFF" Right-Handed w/Rotating Adapter; 2 Port	200/Cs
60-3125	"OFF" Left-Handed w/Rotating Adapter; 3 Port	200/Cs
60-3225	"OFF" Right-Handed w/Rotating Adapter; 3 Port	200/Cs
60-4125	"OFF" Left-Handed w/Rotating Adapter; 4 Port	100/Cs
60-4225	"OFF" Right-Handed w/Rotating Adapter; 4 Port	100/Cs

* Patent # 5,527,299 - Manifold w/Rotating Adapter

** Not for use with power injector system

Medium Pressure Manifolds 550 PSI*

- Large internal manifold lumen (2.3mm diameter) for high flow rates
- 550 PSI non-sterile pressure rating
- Latex free

Product No.	Description	Quantity
31-2121	"ON" Left-Handed w/Rotating Adapter; 2 Port	200/Cs
31-2221	"ON" Right-Handed w/Rotating Adapter; 2 Port	200/Cs
31-3121	"ON" Left-Handed w/Rotating Adapter; 3 Port	200/Cs
31-3221	"ON" Right-Handed w/Rotating Adapter; 3 Port	200/Cs
31-4131	"ON" Left-Handed w/Rotating Adapter; 4 Port	100/Cs
31-4231	"ON" Right-Handed w/Rotating Adapter; 4 Port	100/Cs
60-2121	"OFF" Left-Handed w/Rotating Adapter; 2 Port	200/Cs
60-2221	"OFF" Right-Handed w/Rotating Adapter; 2 Port	200/Cs
60-3121	"OFF" Left-Handed w/Rotating Adapter; 3 Port	200/Cs
60-3221	"OFF" Right-Handed w/Rotating Adapter; 3 Port	200/Cs
60-4131	"OFF" Left-Handed w/Rotating Adapter; 4 Port	100/Cs
60-4231	"OFF" Right-Handed w/Rotating Adapter; 4 Port	100/Cs

* Patent # 5,527,299 - Manifold w/Rotating Adapter

Critical Disposables

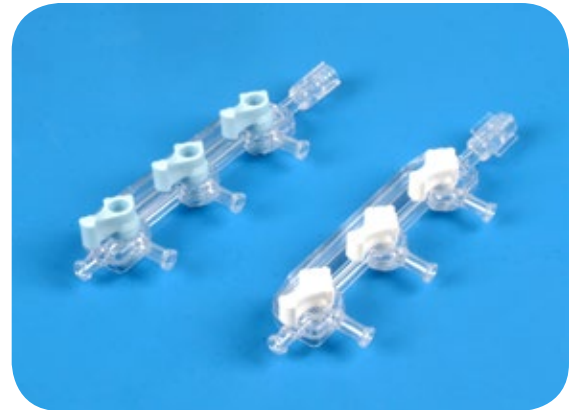
CRITICAL DISPOSABLES

High Pressure Manifolds 800 PSI*

- Continuous large internal manifold lumen (2.3mm diameter) for high flow rates
- Ideal for special procedures requiring small catheters and power injection
- 800 PSI non-sterile pressure rating
- Latex free

Product No.	Description	Quantity
31-2123	"ON" Left-Handed w/Rotating Adapter; 2 Port	200/Cs
31-2223	"ON" Right-Handed w/Rotating Adapter; 2 Port	200/Cs
31-3123	"ON" Left-Handed w/Rotating Adapter; 3 Port	200/Cs
31-3223	"ON" Right-Handed w/Rotating Adapter; 3 Port	200/Cs
60-2123	"OFF" Left-Handed w/Rotating Adapter; 2 Port	200/Cs
60-2223	"OFF" Right-Handed w/Rotating Adapter; 2 Port	200/Cs
60-3123	"OFF" Left-Handed w/Rotating Adapter; 3 Port	200/Cs
60-3223	"OFF" Right-Handed w/Rotating Adapter; 3 Port	200/Cs

* Patent # 5,527,299 - Manifold w/Rotating Adapter



Stopcocks

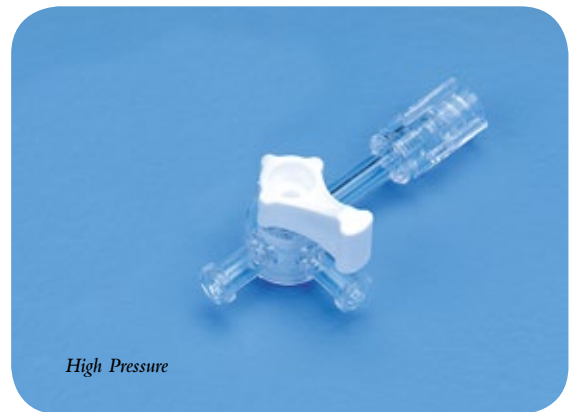
- Available in both high and standard pressure capacity
- Large inner lumens
- Smooth rotation
- Latex free

Product No.	Description	Quantity
High Pressure - Non-Sterile Pressure Rating 800 PSI		
31-1233	"ON" w/Rotating Adapter; 3 Way	400/Cs
31-1L33	"ON" w/Fixed Male Luer Lock; 3 Way	400/Cs
60-1233	"OFF" w/Rotating Adapter; 3 Way	400/Cs
60-1L33	"OFF" w/Fixed Male Luer Lock; 3 Way	400/Cs

Standard Pressure - Non-Sterile Pressure Rating 250 PSI*

31-1225	"ON" w/Rotating Adapter; 3 Way	400/Cs
31-1L25	"ON" w/Fixed Male Luer Lock; 3 Way	400/Cs
60-1225	"OFF" w/Rotating Adapter; 3 Way	400/Cs
60-1L25	"OFF" w/Fixed Male Luer Lock; 3 Way	400/Cs
35-400783	"OFF" w/Male Collar; 3 Way	500/Cs

* Not for use with power injector system



Non-Sterile Angiographic Accessories

CRITICAL DISPOSABLES

Equipment Covers

- Clear polyurethane
- Ensures sterility and protects equipment during procedures
- Latex free

Product No.	Description	Quantity
77-100011NS	Round 14" Diameter	100/Cs
77-100012NS	Round 22" Diameter	100/Cs
77-100013NS	Round 26" Diameter	100/Cs
77-103030TNS	30" x 30" w/Tape	100/Cs
77-104030TNS	40" x 30" w/Tape	100/Cs
77-104060TNS	40" x 60" w/Tape	100/Cs



Pressure Monitoring Lines

- Clear, high durometer for accurate measurements
- Facilitates optimum dynamic response
- Latex free

Product No.	Description	Quantity
301740	6" Male to Female	400/Cs
301726	6" Male to Male	400/Cs
301742	12" Male to Female	400/Cs
301728	12" Male to Male	400/Cs
301743	24" Male to Female	400/Cs
301729	24" Male to Male	400/Cs
301744	36" Male to Female	400/Cs
301730	36" Male to Male	400/Cs
301745	48" Male to Female	400/Cs
301731	48" Male to Male	400/Cs
301746	60" Male to Female	400/Cs
301732	60" Male to Male	400/Cs
301747	72" Male to Female	400/Cs
301733	72" Male to Male	400/Cs
301748	84" Male to Female	400/Cs
301734	84" Male to Male	400/Cs
301749	96" Male to Female	400/Cs
301735	96" Male to Male	400/Cs



Critical Disposables

CRITICAL DISPOSABLES



Waste Stations

- Facilitates the safe collection of fluid waste
- Allows the administration of saline and contrast solutions
- Minimizes contact with infectious blood and bodily fluids
- Leak resistant dual check valves make disposal clean and easy
- Latex free

Product No.		Description	Quantity
Without Clip	With Clip		
35-301692	35-300692	Waste Station w/Vented Spike, Dual Check Valve	80/Cs
35-301695	35-300695	Waste Station w/Macro Drip Chamber, Dual Check Valve	80/Cs
35-301691*	35-300691*	Waste Station w/Vented Spike, Dual Check Valve, Anti-Reflux	80/Cs
35-401215	35-400215	Waste Station Plus Blue Stripe Contrast Line	80/Cs
35-301735*	35-300735*	Waste Station Plus Blue Contrast Line, Anti-Reflux Valve	80/Cs
n/a	35-400192	Waste Station Plus In-Line Contrast Saver (use Mini Spike 35-400212)	80/Cs
35-300726		Abscess Evacuation Set	80/Cs
35-300752		Waste Bag w/60" Tubing & Male Luer Lock	80/Cs
35-300783		Waste Bag w/60" Tubing, In-Line Check Valve & Male Luer Lock	80/Cs

⚠️ *WARNING - This product can expose you to chemicals including bisphenol A, which is known to the State of California to cause birth defects or other reproductive harm. For more information, go www.P65Warnings.ca.gov.

Non-Sterile Angiographic Accessories

CRITICAL DISPOSABLES

Hemostatic Y-Adapters

- Accepts a 9.5 Fr catheter
- Smooth turning Tuohy-Borst valve with rotating adapter
- Latex free

Product No.	Description	Quantity
35-403415	Hemostatic Y-Adapter	100/Cs
35-400468	Torque Device .014"-.022"	100/Cs
35-311452	Guidewire Insertion Tool	100/Cs



Percutaneous Guidewire Introducer Needles

- Sharp cannulas for low penetration force
- Assists clinicians in improving safety
- Innovative needle safety handle that advances from hub to cover needle point
- Sheath that covers needle shaft simultaneously advances as the handle is activated
- Provides protection from blood on shaft as well
- Promotes compliance with H.R. 5178, the Needlestick Safety and Prevention Act
- Meets OSHA BBP guidelines
- Latex free

Product No.	Description	Quantity
35-11078	18 Gauge 2¾ One Part w/o Wings	100/Cs
35-11606	18 Gauge 2¾ One Part w/Wings	100/Cs
35-701763	Non-Sterile SPpro Safety GWI Sharps Safety Needle	100/Cs
35-745395	21 Gauge x 7cm Sp Pro Safety GWI	100/Cs



Critical Disposables

CRITICAL DISPOSABLES

Control Syringes

- Smooth operation
- Clear, glass-like polycarbonate for complete clarity
- Stopper has .5 ml reservoir
- Multiple plunger styles
- Latex free

Product No.	Description	Quantity
35-400504	8 cc Male Luer Lock; Thumb Ring & Finger Rings	100/Cs
35-400505	8 cc Male Rotator; Thumb Ring & Finger Rings	100/Cs
SY-1011A	10 cc Male Luer Lock; Thumb Ring & Finger Rings	100/Cs
SY-1031	10 cc Male Rotator; Thumb Ring & Finger Rings	100/Cs
SY-1053A	10 cc Male Luer Lock; Palm Pad & Wings	100/Cs
SY-1051	10 cc Male Rotator; Palm Pad & Wings	100/Cs
SY-1211A	12 cc Male Luer Lock; Thumb Ring & Finger Rings	100/Cs
SY-1231	12 cc Male Rotator; Thumb Ring & Finger Rings	100/Cs
SY-1253A	12 cc Male Luer Lock; Palm Pad & Wings	100/Cs
SY-1251	12 cc Male Rotator; Palm Pad & Wings	100/Cs



Colored Piston Specialty Syringes

- Smooth operation, polycarbonate barrel
- Ideal for fluid recognition
- Add labels to customize as needed
- Latex free

Product No.	Description	Quantity
35-400320	10 cc Yellow Specialty Syringe	100/Cs
35-400321	10 cc Blue Specialty Syringe	100/Cs
35-400322	10 cc Green Specialty Syringe	100/Cs
35-400323	10 cc White Specialty Syringe	100/Cs
35-400324	10 cc Red Specialty Syringe	100/Cs
35-400325	20 cc Blue Specialty Syringe	100/Cs
35-400326	20 cc Green Specialty Syringe	100/Cs
35-400327	20 cc Red Specialty Syringe	100/Cs
35-400328	20 cc White Specialty Syringe	100/Cs
35-400329	20 cc Yellow Specialty Syringe	100/Cs



Non-Sterile Angiographic Accessories

CRITICAL DISPOSABLES

Braided HP Injector Lines 1200 PSI

- Combines high pressure capacity with superior flexibility
- Available with or without high pressure rotating adapter
- DEHP free
- Latex free

Product No.	Description	Quantity
301652B	10" Female to Male Luer Lock	400/Cs
301205B	10" Female Luer Lock to Male Rotator	400/Cs
301654B	20" Female to Male Luer Lock	400/Cs
301210B	20" Female Luer Lock to Male Rotator	400/Cs
301655B	30" Female to Male Luer Lock	400/Cs
301215B	30" Female Luer Lock to Male Rotator	400/Cs
301656B	48" Female to Male Luer Lock	400/Cs
301220B	48" Female Luer Lock to Male Rotator	400/Cs
301657B	60" Female to Male Luer Lock	400/Cs
301225B	60" Female Luer Lock to Male Rotator	400/Cs
301658B	72" Female to Male Luer Lock	400/Cs
301230B	72" Female Luer Lock to Male Rotator	400/Cs



Non-Braided HP Injector Lines 1000 PSI

- Ideal for all power injector applications
- Offered in a variety of lengths
- Available with or without high pressure rotating adapter
- Latex free

Product No.	Description	Quantity
301652A	10" Female to Male Luer Lock	400/Cs
301205A	10" Female Luer Lock to Male Rotator	400/Cs
301654A	20" Female to Male Luer Lock	400/Cs
301210A	20" Female Luer Lock to Male Rotator	400/Cs
301655A	30" Female to Male Luer Lock	400/Cs
301215A	30" Female Luer Lock to Male Rotator	400/Cs
301656A	48" Female to Male Luer Lock	400/Cs
301220A	48" Female Luer Lock to Male Rotator	400/Cs
301660A	60" Female to Male Luer Lock	400/Cs
301224A	60" Female Luer Lock to Male Rotator	400/Cs
301657A	72" Female to Male Luer Lock	400/Cs
301225A	72" Female Luer Lock to Male Rotator	400/Cs



Critical Disposables

CRITICAL DISPOSABLES

Ultra HP Injector Lines 1200 PSI

- Ideal for power injector applications
- Our highest pressure rating available for non-braided tubing
- Latex free

Product No.	Description	Quantity
301240	10" UHP Female Luer Lock to Male Rotator	400/Cs
301670	10" UHP Male to Female Luer Lock 400/Cs	
301245	20" UHP Female Luer Lock to Male Rotator	400/Cs
301671	20" UHP Male to Female Luer Lock 400/Cs	
301250	30" UHP Female Luer Lock to Male Rotator	400/Cs
301672	30" UHP Male to Female Luer Lock 400/Cs	
301255	48" UHP Female Luer Lock to Male Rotator	400/Cs
301673	48" UHP Male to Female Luer Lock 400/Cs	



CRITICAL DISPOSABLES LINE SPECIFICATIONS

For HP Lines (Non-Braided)

Hydrodynamic Pressure - High Pressure Lines will withstand one injection at 1000 psi using the following settings when tested using a MedRad Mark IV™ Coronary Injector:

Limiting Pressure: Up to 1200 psi; Injection Volume: Up to 20 mL; Flow Rate: Up to 20 mL/sec; Linear Rise: 0 seconds

For HP Lines (Braided)

Hydrodynamic Pressure - Ultra High Pressure Lines will withstand up to three injections using the following hydrodynamic injection settings when tested using a MedRad Mark IV™ Coronary Injector:

3.3.3.1 Using a 4F, 5F, or larger catheter (0.035" or 0.038" ID)

Limiting Pressure: Up to 1200 psi; Injection Volume: Up to 45 mL; Flow Rate: Up to 22 mL/sec; Linear Rise: 0 seconds

3.3.3.2 Using a 6F or larger catheter (0.038" ID)

Limiting Pressure: Up to 1200 psi; Injection Volume: Up to 100 mL; Flow Rate: Up to 35 mL/sec; Linear Rise: 0 seconds

For Ultra High Pressure Lines (Non-Braided)

Hydrodynamic Pressure - Ultra High Pressure Lines will withstand up to three injections using the following hydrodynamic injection settings when tested using a MedRad Mark IV™ Coronary Injector:

3.3.3.1 Using a 4F, 5F, or larger catheter (0.035" or 0.038" ID)

Limiting Pressure: Up to 1200 psi; Injection Volume: Up to 45 mL; Flow Rate: Up to 22 mL/sec; Linear Rise: 0 seconds

3.3.3.2 Using a 6F or larger catheter (0.038" ID)

Limiting Pressure: Up to 1200 psi; Injection Volume: Up to 100 mL; Flow Rate: Up to 35 mL/sec; Linear Rise: 0 seconds

Non-Sterile Angiographic Accessories

CRITICAL DISPOSABLES

Retractable Safety Scalpels

- Meets Federal requirements for the use of sharps with engineered safety protection
- Easy to operate
- A wide selection of blade sizes, with #11 for angiography use
- Provides full blade visibility at all times to reduce the chance of accidental injury
- Ribbed slip resistant finger grips ensure a secure hold in gloved hands
- Permanent lock for final disposal
- Latex free

Product No.	Description	Quantity
D4510NS	#10 Safety Scalpel, Black Slider	100/Cs
D4511A	#11 Safety Scalpel, Blue Slider	100/Cs
D4515NS	#15 Safety Scalpel, Green Slider	100/Cs



Needle Counters

- Provides a place to safely park needles
- Easy-to-read numbers and description facilitate correct count of blades and needles
- Hinged cover allows sharps to be easily collected and safely contained for disposal in sharps container
- Latex free

Product No.	Description	Quantity
25-0501NS	10 Count Needle Counter, Foam/Adhesive	100/Cs
25-0502NS	20 Count Needle Counter, Foam/Adhesive	100/Cs
25-0402NS	10 Count Needle Counter, Magnet/Foam	100/Cs
25-0401NS	20 Count Needle Counter, Magnet/Foam	100/Cs



Critical Disposables

CRITICAL DISPOSABLES

SharpStop™

- Helps prevent accidental needle sticks
- Provides a safe place to park needles
- Adhesive tab on bottom to secure to work surface
- Latex free

Product No.	Description	Quantity
35-400456	SharpStop Needle Holder	100/Cs



Simplicity® Sharps System

- Unique patent pending design reduces the chance of accidental sticks associated when closing a traditional needle counter box
- Convenient thumb holder distances hand away from the sharps during transport to a sharps container
- Easy to read numbers and spaces to facilitate correct count of sharps
- Foam block aids in securing suture needles and performing accurate counts
- Supports hospitals in reducing their regulated medical waste
- Latex free

Product No.	Description	Quantity
25-0900NS	Simplicity	200/Cs
25-0901NS	Simplicity w/Foam	200/Cs



Non-Sterile Angiographic Accessories

CRITICAL DISPOSABLES

Splash Stop™

- A safe alternative to messy, open basins
- Closed bowl minimizes staff and patient exposure to bloodborne pathogens
- A true engineering and work practice control
- Secure, non-splatter lid with tapered insertion site
- Safe, one-step biohazard warning label
- Latex free

Product No.	Description	Quantity
77-301370N	SplashStop Waste Collection Bowl	100/Cs
77-301371N	SplashStop Waste Collection Bowl w/Solidifier	100/Cs



Contrast Saver Sets

- Minimize contrast waste
- Maximize potential savings
- Two-part system with or without floating disk
- Latex free

Product No.	Description	Quantity
35-400211	Contrast Saver Burette Set w/Disk	100/Cs
35-420530*	Cone Contrast Management Device	100/Cs
35-400212	Mini-Spike Fluid Transfer Set w/One-Way Stopcock	100/Cs

⚠️ WARNING - This product can expose you to chemicals including bisphenol A, which is known to the State of California to cause birth defects or other reproductive harm. For more information, go www.P65Warnings.ca.gov.



Fluid Administration Sets

- Allows smooth bubble-free priming of closed system
- Available in standard I.V. and large bore tubing
- Available vented and non-vented
- Latex free

Product No.	Description	Quantity
35-530042	72" Large Bore Vented Tubing	25/Cs
35-301042	Standard Non-Vented Tubing w/.15 Micron Filter & Macro Drip Chamber	25/Cs
35-530007	72" Non-Vented Bifurcated w/Macro Drip Chamber	25/Cs



Critical Disposables

CRITICAL DISPOSABLES

mBrace™ Wrist Support

- Flat front edge helps prevent rolling and provides a stable platform to support the wrist
- Soft fabric helps wick away moisture and provides comfort for the patient, especially for longer arterial line deployments
- Consistent 40° wrist extension angle from one patient to the next
- Foam pad can be used to easily adjust angle of extension and cushion IV lines on the dorsal surface of hand or wrist
- Straps adjust easily to accommodate virtually any size hand
- Compatible with radial compression devices for post-catheterization hemostasis and specially designed for use with the RadAR™ Vascular Compression Device
- Latex free



Product No.	Description	Quantity
140-0200-00	mBrace Wrist Support	30/Cs
140-0200-00S	mBrace Wrist Support, Sterile	30/Cs

* mBrace is a trademark of Semier Technologies, Inc.

Flexible I.V. Armboard

- Malleable board for custom positioning with soft, foam cover
- Adjustable foam straps eliminate the need for skin-irritating tape
- Straps attach to board to limit arm and hand movement during IV therapy
- Can be used for extending and stabilizing the wrist during vascular access procedures, including arterial line insertions and cardiac catheterizations using the radial artery or vein
- Helps prevent patients from flexing their wrist during extended deployments for arterial lines
- Latex free



Product No.	Description	Quantity
M8125-A	Adult Flexible Arm Board (9" long x 4" wide)	25/Cs
M8125-P	Premie Flexible Arm Board (2" long x 1" wide)	30/Cs
M8125-I	Infant Flexible Arm Board (4" long x 1" wide)	30/Cs
M-8125-C	Child Flexible Arm Board (6" long x 2" wide)	30/Cs

Non-Sterile Angiographic Accessories



A division of DeRoyal Industries, Inc.

700 Bevier Road
Sanford, FL 32771
phone: 800.538.9407
fax: 407.321.9433
E-mail: cdiinfo@deroyal.com

©2018 DeRoyal
Reprint # 0-2016
Rev. 8/31/2018