



SOFSORB®



SOFSORB® Ag



SOFSORB® 5-Layer Design



Sofsorb® is a highly absorbent, multilayered one-piece dressing. The Ag offering adds an antimicrobial barrier to the wound contact layer. The dressing can be used dry or wet and secured in place by Stretch Net™ elastic bandage. Available in over 50 standard sizes, including face, hand and pediatric sizes. Custom sizes also available – and everything can be made with or without antimicrobial barrier layer!

SOFSORB®
absorbent wound dressing



SOFSORB® AG
antimicrobial absorbent wound dressing



features & benefits:

absorbent wound dressing

- A highly absorbent, multi-layered one-piece dressing
- Five layer construction:
 - 1 – Non-adherent wound contact layer
 - 2 – Stay-Dry Liner that permits passage of wound drainage to keep periwound skin dry and prevent maceration at wound site
 - 3 – Center layer that absorbs wound drainage
 - 4 – Cellulose layer that wicks drainage horizontally along pad to increase dressing absorption capacity
 - 5 – Air-permeable backing for strength and durability
- May be soaked with saline or topical agents prior to use
- Rounded edges and tapered limb configurations conform to curved and hard-to-dress areas without unnecessary bulk
- Ideal for protecting wound sites from further trauma
- Soft pliability allows for range of motion exercises during recovery

features & benefits:

- A highly absorbent, multi-layered one-piece dressing
- Five layer construction:
 - 1 – Antimicrobial barrier, non-adherent wound contact layer
 - 2 – Stay-Dry Liner that permits passage of wound drainage to keep periwound skin dry and prevent maceration at wound site
 - 3 – Center layer that absorbs wound drainage
 - 4 – Cellulose layer that wicks drainage horizontally along pad to increase dressing absorption capacity
 - 5 – Air-permeable backing for strength and durability
- Rounded edges and tapered limb configurations conform to curved and hard-to-dress areas without unnecessary bulk



Standard



Sheets



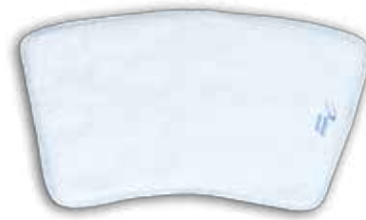
Standard



Tapered Limb



Custom



Tapered Limb

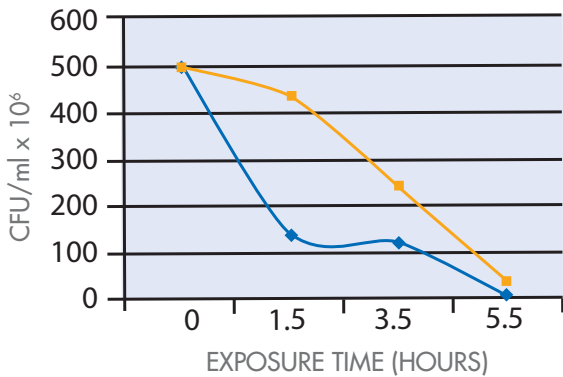


five layer construction

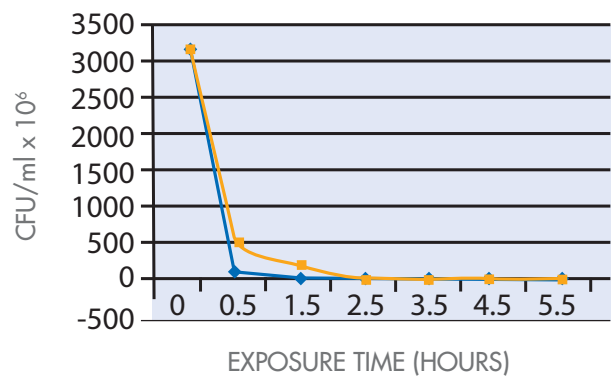
1. Non-adherent wound contact layer (Ag provides antimicrobial barrier)
2. Stay-Dry Liner that permits passage of wound drainage to keep periwound skin dry and prevent maceration at wound site
3. Center layer that absorbs wound drainage
4. Cellulose layer that wicks drainage horizontally along pad to increase dressing absorption capacity
5. Air-permeable backing for strength and durability

survival curves (ag):

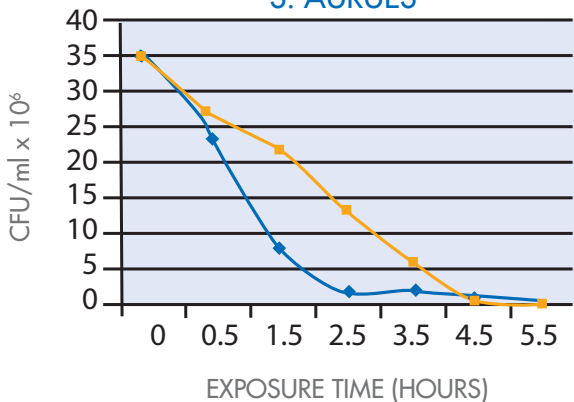
MRSA



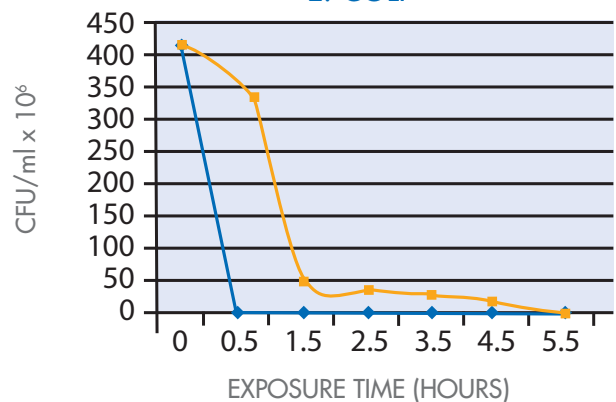
S. AUREUS



S. AUREUS



E. COLI



SOFSORB®

absorbent wound dressing



SOFSORB® AG

antimicrobial absorbent wound dressing

Product #	Size	Qty/Bx	Qty/Cs	HCPC
SOFSORB STANDARD DRESSINGS				
46-101	4" x 6"	30	120	A6252
46-102	6" x 9"	20	80	A6253
46-103	9" x 15"	n/a	30	A6253
46-104	15" x 18"	n/a	20	A6253
46-105	15" x 24"	n/a	15	A6253
46-106	4" x 9"	25	100	A6252
46-109	3" x 3"	30	60	A6251

Product #	Size	Qty/Cs	HCPC
SOFSORB CUSTOM DRESSINGS			
46-121	Full Arm Dressing	20	
46-122	Full Leg Dressing	20	
46-123	Large Chest Dressing	20	
46-124	Pediatric Boot/Foot Dressing	20	
46-125	Medium Boot/Foot Dressing	20	
46-126	Large Boot/Foot Dressing	20	
46-127	Elbow Dressing	20	
46-128	Scalp Dressing	20	
46-129	Face Dressing	20	
46-130	Large Buttocks Dressing	15	
46-131	Medium Hand Dressing	20	
46-132	Drainage/Tube Dressing	100	
46-133	Small Chest Dressing	20	
46-134	Medium Chest Dressing	20	
46-137	Medium Buttocks Dressing	20	
46-138	Small Buttocks Dressing	20	
46-151	Large Burn Jacket	10	

Product #	Size	Qty/Cs	HCPC
SOFSORB TAPERED LIMB DRESSINGS			
46-111	XS (15")	20	A6253
46-112	S (18")	20	A6253
46-113	M (21")	20	A6253
46-114	ML (23")	15	A6253
46-115	L (26")	15	A6253
46-116	XL (29")	15	A6253

Product #	Description	Size	Qty/Cs	HCPC
SOFSORB PADS AND SHEETS				
46-107	Permeable Pad	24"x 36"	20	
46-108	Permeable Pad	33"x 36"	15	
46-135	Permeable Sheet	36"x 76"	15	
46-110	Non-Permeable Pad	33"x 36"	15	
46-136	Non-Permeable Sheet	36"x 76"	15	

indications:

Burns
Post-operative incision sites
Heavily draining skin ulcers

Heavily draining pressure sores
Lacerations and abrasions



indications:

Burns
Post-operative incision sites
Heavily draining skin ulcers

Heavily draining pressure sores
Lacerations and abrasions



sizing:

Choose the Sofsb dressing that best fits the size of the wound from the sizes available. If using a tapered limb Sofsb dressing, determine the correct size by measuring the largest circumference of the limb with the special measuring tape.



DeRoyal®, DeRoyal logo, Improving Care. Improving Business.®, Sofsb®, and Algidex Ag® are registered trademarks of DeRoyal Industries, Inc.

Stretch Net™ and Fluftex™ are trademarks of DeRoyal Industries, Inc.

All study and clinical data claims are on file.

Copyright© 2015, DeRoyal. All rights reserved.